

**DELHI PUBLIC SCHOOL, RAIPUR**  
**TERMINAL ASSESMENT- II (2022-23) (MODEL PAPER)**

**SUBJECT: EVS**

**DATE:** \_\_\_\_\_

**MARKS: 50**

**NAME:** \_\_\_\_\_ **CLASS: II SEC:** \_\_\_\_\_ **ROLL NO:** \_\_\_\_\_ **MARKS OBTAINED:** \_\_\_\_\_

**INVIGILATOR'S SIGN:** \_\_\_\_\_ **EXAMINER'S SIGN:** \_\_\_\_\_ **RECHECKER'S SIGN:** \_\_\_\_\_

**I. Fill in the blanks:**

**(1×10=10)**

1. When weather conditions stay same for a long period of time, it is called \_\_\_\_\_.
2. A piece of land surrounded by water from all sides is called an \_\_\_\_\_.
3. We use \_\_\_\_\_ service to send emails.
4. Layer of air around the Earth is called \_\_\_\_\_.
5. When the environment gets dirty or is full of harmful substances, it is called \_\_\_\_\_.
6. Cholera and typhoid are \_\_\_\_\_ diseases.
7. The \_\_\_\_\_ is a huge ball of burning gases.
8. Our solar system belongs to the galaxy called the \_\_\_\_\_.
9. \_\_\_\_\_ is the highest mountain peak in the world.
10. We should always walk on \_\_\_\_\_.

**II. Write whether the statement are true or false:**

**(1×6=6)**

1. Throwing garbage in the water bodies spread noise pollution. [     ]
2. Planets do not have light of their own. [     ]
3. A globe is a model of the Sun. [     ]
4. CNG is a fuel that reduces air pollution. [     ]
5. Noise pollution is caused by very loud sound. [     ]
6. Letter is a means of mass communication. [     ]

**III. Name the following:**

**(1×6=6)**

1. Two things we use in rainy season

Ans: \_\_\_\_\_

2. Two means of land transport

Ans: \_\_\_\_\_

3. Two things used in winter season.

Ans: \_\_\_\_\_

4. A pollution which affects our hearing and health.

.Ans: \_\_\_\_\_

5. A famous constellation.

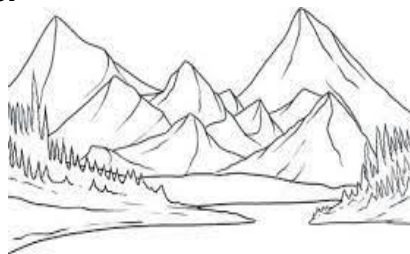
Ans: \_\_\_\_\_

6. Two main fuels used in vehicles.

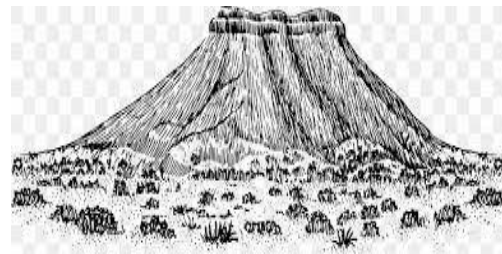
Ans: \_\_\_\_\_

**IV. (a) Identify the given pictures of landform and classify them as hills, plains, valleys and plateaus.**

**(1×6=6)**



1. \_\_\_\_\_



2. \_\_\_\_\_

**(b) Identify the given pictures of season and classify them as summer, winter, rainy, autumn and spring**

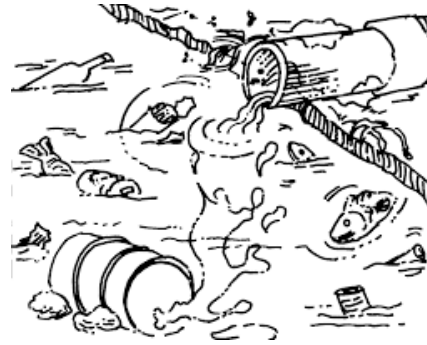
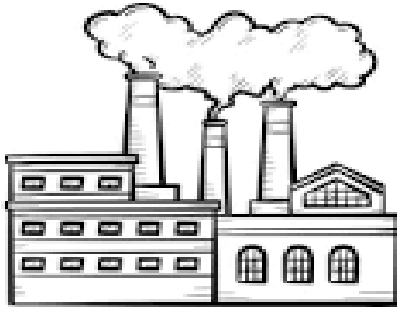


1 \_\_\_\_\_



2 \_\_\_\_\_

(c) Identify the given pictures of pollution and classify them as air, water, land and noise pollution.



1. \_\_\_\_\_

2. \_\_\_\_\_

**V. Answer the following questions:**

**(2x8=16)**

1. Name any three water bodies.

Ans: \_\_\_\_\_  
\_\_\_\_\_  
\_\_\_\_\_

2. Write two causes of water pollution?

Ans: \_\_\_\_\_  
\_\_\_\_\_  
\_\_\_\_\_

3. What is universe?

Ans: \_\_\_\_\_  
\_\_\_\_\_  
\_\_\_\_\_

4. From where does the Earth get heat and light ?

Ans: \_\_\_\_\_  
\_\_\_\_\_  
\_\_\_\_\_

5. What is communication? Write three means of mass communication.

Ans: \_\_\_\_\_  
\_\_\_\_\_  
\_\_\_\_\_

6. What are water-borne diseases?

Ans: \_\_\_\_\_  
\_\_\_\_\_  
\_\_\_\_\_

7. What is environment? Write four types of pollution.

Ans: \_\_\_\_\_  
\_\_\_\_\_  
\_\_\_\_\_

8. Write any two safety rules we should follow in school.

Ans: \_\_\_\_\_  
\_\_\_\_\_  
\_\_\_\_\_

**VI. Draw and label :**

**(3x2=6)**

1. One means of land transport and air transport.



2. Two constellations

